

# KING'S ACADEMY EASTHAMPSTEAD PARK



King's Academy  
Easthampstead Park

## WEEKLY NEWSLETTER

11 November - 15th November  
Week B

## RESPECTFUL, SUCCESSFUL, AND WORLD WISE

### A message from the Deputy Headteacher



A warm welcome back to you all following on from the half term. We do hope that you had a restful and enjoyable half term. We are looking forward to another exciting half term ahead and all students have returned to school with a positive attitude in what has already been a busy week. They have been busy demonstrating the school values of Being Successful, Being Respectful and Being World wise.

Students have been reminded of the importance of following the school behaviour curriculum with a reminder assembly led by Miss Preston about the school expectations and our consistent application of "Meet and Greet, One Voice, Track the speaker and silent solo". It is always a pleasure to see students engaged in their learning, taking responsibility and wanting to achieve.

All students in Year 7 - 11 should know their Kay Science and Sparx logins to ensure that they are engaging in the online learning programme. External research conducted by RAND Europe and Cambridge University found that using Sparx Maths for 1 hour a week significantly improves grades. Students using Sparx Maths Homework made 83% more progress with just 15 minutes of practice (in comparison to those who did no homework).

A particular mention to our Year 11 students who returned to school walking straight into their set of Pre Public examinations where the majority of the students' efforts and behaviour has been exemplary. We have confidence that the Class of 2025 will continue our upward trend in GCSE outcomes. To support with knowledge recall, Year 11 students have also had the opportunity this week to see a live performance from the Schools Shakespeare Tour of Romeo and Juliet.

We have identified our winners of our spooktacular house Halloween competition and would like to thank all students and parents/ carers that supported us with a record number of entries. The PE department and our rugby players have been busy with competitive fixtures against local schools. There has also been an internal football match involving staff and our sixth form students with the staff winning. I am sure the students will be out for revenge in the next fixture!

Can I remind all parents of the importance of attendance, and that students must be in school at 8.40am. We do appreciate that at this time of year students are more likely to pick up a bug, but please wherever possible encourage students to attend and support us with building up resilience so they can achieve success. There is such an impact on good attendance and student success in school. "While 78% of all children who were rarely absent in both years passed at least 5 GCSEs including English and maths, only 36% of children who were persistently absent in both years and just 5% of children who were severely absent in both years reached this same standard." Children's Commissioner for England November 2023.

As we approach the winter months a reminder about our uniform expectations. Shoes should be black, and able to be polished, so not canvas. Please ensure that students are wrapped up warm in line with the Coat policy, making sure coats are of a dark colour. If you require any support with coats then please get in contact with Mr Holmes Family support advisor,

We are proud of our students and we value the school community of parents/ carers working with us to achieve success. We look forward to another busy and successful term ahead of us.

Kind regards  
Ms O'Brien

### DATES FOR YOUR DIARY

#### MONDAY 11th November

Careers meetings  
Christmas Markets parent information evening  
GCSE maths paper 2 re-sit  
Girls on Board Assembly - Year 7  
Deadline for Armistice day poster and poetry competition  
National Literacy Trust Live event (Remembrance live assembly breaktime)  
2 minutes silence at 11am

#### TUESDAY 12th NOVEMBER

Year 8 rugby fixture Brackenhale

#### WEDNESDAY 13th November

Sports Council meeting - Break time  
KS3 Cross Country P1-3

#### THURSDAY 14th November

#### FRIDAY 15th November

Yr10 full progress reports home  
Yr10/11 hospitality trip departs  
Mock COP at Holme Grange School  
Girls on Board Assembly Year 10  
David Baddiel live event (period 1)

CLICK [HERE](#) FOR THE SCHOOL  
CALENDAR

## HOUSE CUP COMPETITION



24200



1st - 25509



24458



23204

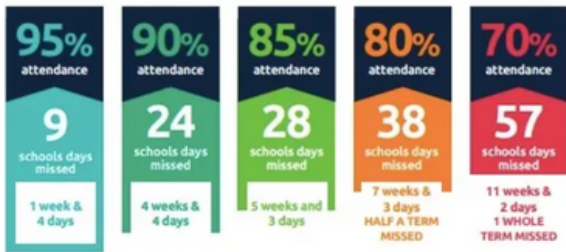


21785



23251

## Every day in school counts...



and every minute counts...



# YEAR 7 NEWS

## Year 7 Winners

### Pumpkin Carving



Thalia Bradley

### Spooky Baking



Leon Bradley

# Attendance

Attendance is really important, we want your child to be given the best possible chance to achieve.

We understand that some absences are unavoidable, but if your child is going to be absent during term time, we ask that you submit a leave request form which can be found [here](#)

**IMPORTANT - Please remember that we do not have a 48 hour rule as such. If your child has been sick, but they are feeling better, they should return to school. You do not have to wait until 48 hours after the last episode of vomiting, unless it is clearly a contagious bug.**

**Covid - If your child feels well enough, please send them to school as you would for a normal cold.**

Each week we run the "Duck Awards" where the tutor group with the highest attendance is awarded a highly sought after giant duck to spend the week in their tutor rooms. Last week

the ducks were with...

Year 7 & 8 - 7D4

Year 9 & 10 - 9D7

Year 11- 11D6

KAEP6- - 12D2



## SPORTING ACHIEVEMENTS



This week, the Year 8 Rugby team had a fixture at Brakenhale. They beat Ranelagh, and lost against Garth Hill College. The whole team played really well and, most importantly, had fun!

We also had cross-country trials on Monday for Year 7, 8 and 9. Lots of students attended from all year groups and letters will be going out shortly for the race later in the month.

## WINTER HOUSE COMPETITION

### Bake & decorate!

Bake & decorate any shape or size gingerbread and send your photo to Mrs Wise

Closing date: Friday 13 December

Our students are successful



# YEAR 8 NEWS



## Year 8 Winners

### Pumpkin Carving



Heath Weeks



### Spooky Baking



Grace Hale



# HOUSE HEROES

## ENGLEMERE

Milo-James D 7D7  
 Freya S 8D1  
 Emily T 9D1  
 Darcy O 10D1  
 Esabella H 11D1

## SWINLEY

Jack H 7D2  
 Logan B 8D2  
 Austin B 9D2  
 Evey G 10D2  
 Ashton W 11D2

## WILDMOOR

Joshua J 7D3  
 Gabriella DSO 8D3  
 Zachary W 9D3  
 Amelia R 10D3  
 Bonnie C 11D3

## CAESAR

Gabija S 7D4  
 Laura S 8D4  
 George N 9D4  
 Sophia-Rose S 10D4  
 Ashton P 11D4

## DRYDEN

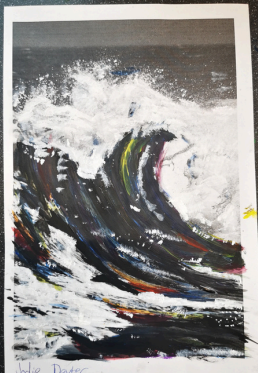
Alexis B 7D5  
 Nisa H 8D5  
 Ayah A 9D5  
 Hadlee G 10D5  
 Cameron H 11D5

## PINEWOOD

Leon B 7D6  
 Smit P 8D6  
 Eleanor P 9D6  
 Karma G 10D6  
 Samuel M 11D6

# YEAR 9 NEWS

Inspired by the Waves of Maggie Hambling, Yr 9 students have produced some excellent work in art this week



## Year 9 Winners

### Pumpkin Carving



Eleanor Press



### Spooky Baking



India Winfield



*Our students are respectful*

# LITTER DUTY ROTA

- 11th November  
7D5
- 12th November  
7D6
- 13th November  
7D7
- 14th November  
7D8
- 15th November  
8D1



# IMPORTANT ANNOUNCEMENTS

## E-Scooters

Christmas is fast approaching so it feels a good time to remind you that it is illegal to ride a private e-scooter in public. They are not allowed on the school site at all.

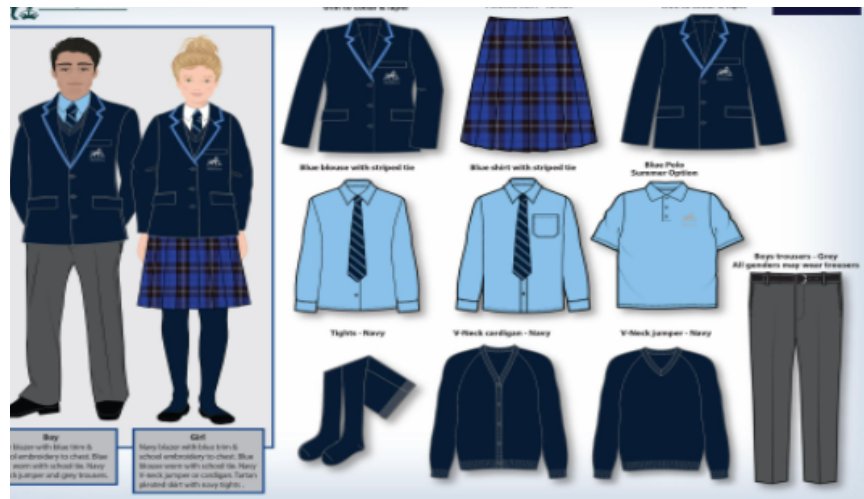


The winners of our October House competitions have been chosen and house points awarded. Well done to everyone that took part, we had some amazing entries.



Please remember that if your child is a member of an organisation such as cadets, scouts, guides etc then we encourage them to wear that uniform to school on Monday for remembrance day.

There is staff training after school on Wednesday 13th November, focused on teaching reading as we believe reading is crucial to allow all students to access the curriculum effectively. This means that staff won't be available to speak to after 3:10pm.



# UNIFORM

Please remember there have been a few changes to our uniform rules this year, concerning hair colour, jewellery, and footwear.

In short, no jewellery allowed except one small stud in each earlobe. Extreme hairstyles and non-natural hair colours are not allowed. Shoes must be completely black and able to be polished. No canvas shoes. Please find links to purchase our uniform and school supplies

[HERE](#)

## WORD OF THE WEEK

11/11/24

### sculpt

word and meaning

#### Verb

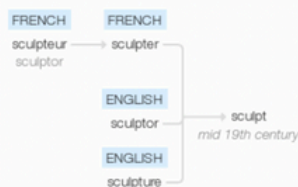
- To create or represent something by carving, casting, or other shaping techniques.

#### example usage

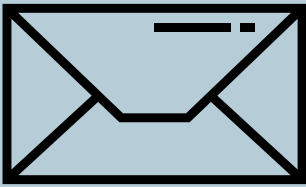
- The artist carefully sculpted the wood.
- Most familiar landscapes have been sculpted by surface erosion.

**Synonyms:** carve, model, form, shape, cast

#### Origin







# COMMUNICATIONS

PLEASE SEE BELOW FOR LINKS TO ALL COMMUNICATIONS SENT OUT LAST WEEK

- [Cowshed Trip Year 12](#)
- [Year 12 PPE Letter](#)
- [Year 13 PPE Letter](#)
- [Fashion Seminar Trip Year 12](#)

## YEAR 10 NEWS

### *Year 10 Winners*

#### *Pumpkin Carving*



*Ellen Jenkins*



## YEAR 11 NEWS

Congratulations to all our year 11's for getting through the first week of their PPE's so brilliantly. They have done so well and we are really proud of all of them.

We did break the week up a bit with a special visit from the Guilford Shakespeare Company, who performed Romeo and Juliet for all our Year 11's. Hopefully that will give them some helpful insight for their English Literature.



The deadline for applications for our sixth form is the 15th November. KAEP6 is an excellent setting for your child to continue their educational journey. You can apply [HERE](#). You don't need to wait for your PPE results, you can enter the data from the last report your child received.



*Our students are world wise*

**Follow Us**



# Extra Curricular Clubs

Participating in extracurricular clubs offers numerous benefits for students, extending far beyond academic achievements. These clubs provide a platform for students to explore their interests, develop new skills, and foster a sense of community. By engaging in activities they are passionate about, students can enhance their creativity and critical thinking. Leadership roles within clubs teach responsibility, teamwork, and communication skills, which are invaluable in both personal and professional realms. Additionally, extracurricular involvement can improve time management as students balance their academic responsibilities with club commitments. Overall, these clubs enrich the educational experience, helping students to grow holistically and preparing them for future challenges.

# Sports Clubs

Joining sports clubs offers a myriad of benefits that contribute to both physical and mental well-being. These clubs provide an excellent opportunity for regular exercise, which is essential for maintaining good health and fitness. Participation in sports fosters teamwork, discipline, and perseverance as athletes work together towards common goals and strive to improve their skills. Sports clubs also help in building strong social connections, promoting camaraderie and friendships that can last a lifetime. Additionally, being part of a sports team can boost self-confidence and relieve stress, as the physical activity releases endorphins and provides a constructive outlet for energy. Ultimately, sports clubs enhance the overall development of individuals, instilling valuable life skills and promoting a healthy, active lifestyle.

△ = Counts toward DofE skill

## KAEP NON-PE CLUBS

Day	Club	Time	Room/staff
Monday	Bereavement Club Chess Club △ Book Club (Week A only) △ Poetry Club	Break Lunch 3:10-4:10 3:10-3:50	129/Mr Noakes Library/Mr Ball Library/Mrs Collins 58/Various
Tuesday	Debate Club/Mock Trial △	Lunch	7/Mr Ball
Wednesday	Art Club	3:15-4:15	34/Ms Thake
Thursday	Craft Club (Week A only) Board Game Club (Week B only) Textiles Club (Week B only) △ Astronomy Club △ Theatre Skills Club Cooking Club (Week A only) Dungeons and Dragons Club	Break Break 3:15-4:15 3:10-4:10 3:10-4:10 3:10-4:30 3:10-4:10	100/Various 100/Various 44/Miss Miller 130/ Mr Noakes E2/Various KS3 Kitchen/Mrs Wise Library/Mrs Collins
Friday	Touch Typing Club Warhammer △	Lunch 3:15-4:15	115/Ms Evans Library/Mrs Collins

△ = Counts toward DofE skill

## KAEP PE CLUBS

Day	Club	Time	Location	Staff
Monday	Table-Tennis △	Break	Sports hall	Miss White
Monday	Year 7-9 Basketball △	3:10-4:10	Sports hall	CS
Monday	Year 7-10 Fitness △	4:10-4:10	Gym	Mr Clark
Tuesday	Year 7-10 Rugby △	3:10-4:10	Field	Mr Mitchell/Miss White
Tuesday	Year 7-10 Netball △	3:10-4:10	Netball Courts	Miss Burrows
Wednesday- Week B	Sports Council △	Break	54	Miss Burrows
Wednesday	Badminton △	Break	Sports Hall	Miss White
Thursday	Year 10 and 11 Basketball △	Break	Sports hall	Mr Mitchell/Miss White
Thursday	Girls Football △	3:10-4:10	Astro	Miss Oakley
Thursday	Boxing △	3:20 - 4:20	Gym	LA Boxing (signup prior)
Thursday	Duke of Edinburgh △	3:10-4:10	Various	Miss Burrows/Mr Couldridge
Friday	Table Tennis △	Break	Gym	Miss Oakley

JOIN US AT  
**KAEP6**  
Take a leap towards your future by joining KAEP6.  
sign up here   
or contact [simon.puttick@kgaeasthampstead.uk](mailto:simon.puttick@kgaeasthampstead.uk)  
to arrange a tour

